

# Victorian Emergency Animal Welfare Plan

## Summary of Responsibilities and Response Structures

*This fact sheet outlines the responsibilities of government agencies for animal welfare in emergencies.*

The primary responsibility and duty of care for animals always remain with the person in charge of the animal (the owner or carer). They should have a rehearsed emergency plan for their animals which includes an evacuation kit, suitable transport and multiple evacuation routes where possible.

### Responsibilities of government agencies

#### DEDJTR - Agriculture Victoria

- primary agency for welfare of livestock and companion animals
- all hazards, all species excluding wildlife
- coordination of animal welfare agencies.

#### DELWP

- primary agency for wildlife welfare
- coordination of wildlife agencies & volunteers
- wildlife welfare assessment.

#### Local government

- care of animals at relief centres (where capacity exists)
- stray, wandering and lost animals
- disposal/burial of carcasses.

### Responsibilities of key partner organisations

#### Australian Veterinary Association (AVA)

Maintains and coordinates a volunteer database of veterinarians and veterinary nurses to support animal welfare emergencies

#### Royal Society for the Prevention of Cruelty to Animals (RSPCA)

May assist Agriculture Victoria and DELWP to undertake animal welfare assessment activities and provide animal welfare resources as required

#### Victorian Farmers Federation (VFF)

Liaises with Agriculture Victoria to determine the scale and coordination of fodder distribution requirements

#### Municipal Association of Victoria (MAV)

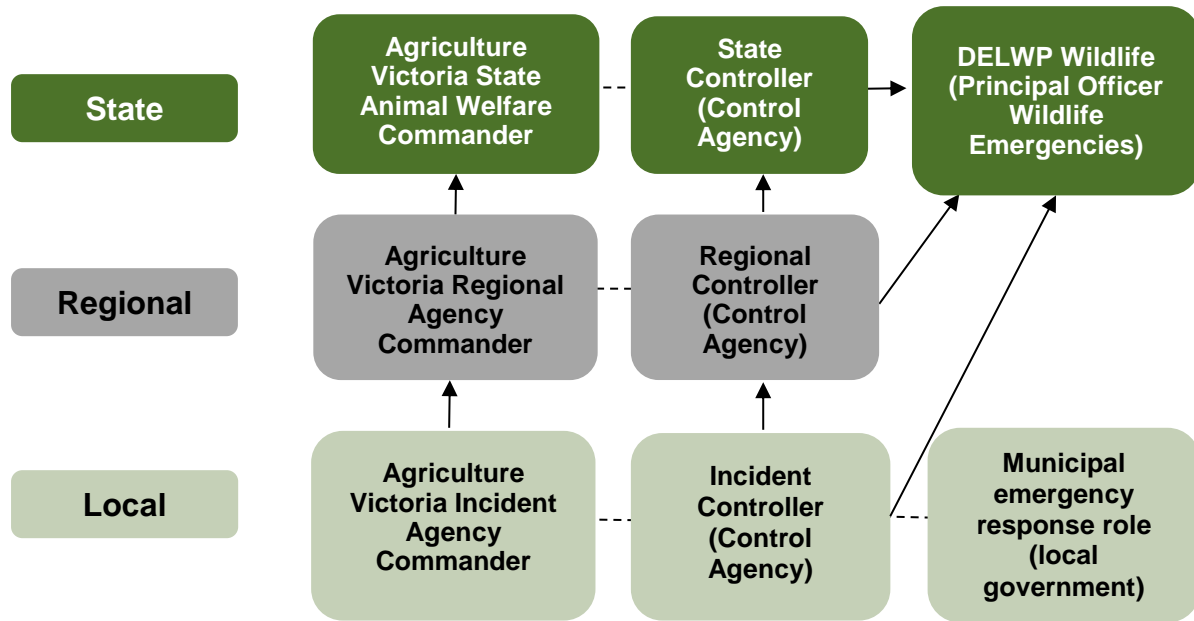
Provides coordination of local government areas impacted by emergencies and provides resource sharing arrangements



*NOTE- access or requests to any key partner organisations must be made via DEDJTR or DELWP as appropriate (depending on the incident). They will coordinate and communicate to ensure state oversight, prioritisation and to avoid duplication.*

## Emergency animal welfare response structure

The State Biosecurity Operations Centre (SBOC) at Attwood is the preferred facility to lead large scale livestock and companion animal welfare responses, but Agriculture Victoria maintains a flexible approach to suit the geographical location and nature of the incident. DELWP will lead wildlife response activities through the Incident Management Team and the State Control Centre. The structures below represent arrangements for a level two or three incident.



### DELWP Wildlife

Links to DEDJTR (Agriculture Victoria) at state level through State Animal Welfare Commander DELWP, which is also connected to DEDJTR (Agriculture Victoria) at regional emergency management Team and incident levels

### AVA

Links to DEDJTR (Agriculture Victoria) at state level through State Animal Welfare Commander  
Links to DELWP at state level through State Agency Commander

### RSPCA

Links to DEDJTR (Agriculture Victoria) at state level through State Animal Welfare Commander  
Links to DELWP at state level through State Agency Commander

### VFF

Links to DEDJTR (Agriculture Victoria) at state level through State Animal Welfare Commander

### Local Government

Links to DEDJTR (Agriculture Victoria) at regional level through Regional Agency Commander (Regional Animal Welfare Commander) and at incident level through DEDJTR (Agriculture Victoria) Incident Agency Commander.

For further information, or to receive this fact sheet as an accessible version, please refer to the Victorian Emergency Animal Welfare Plan page on the Agriculture Victoria website at:

<http://agriculture.vic.gov.au/agriculture/emergencies/response/victorian-emergency-animal-welfare-plan/>