

A better place for greyhounds

NEW CODE OF PRACTICE FOR THE KEEPING OF RACING GREYHOUNDS

ANIMAL
WELFARE VICTORIA



Greyhound husbandry

- Puppy vaccinations complete by 16 weeks
- Annual health checks and vaccinations required for all greyhounds
- Muzzles must not prevent panting/drinking or cause pain or distress
- Emphasis on critical socialisation period
- Greyhounds can be exercised, socialised and enriched according to the Code *or* alternate protocols in the approved Establishment Health Management Plan (EHMP)
- Greyhounds can be prepared for rehoming using the process outlined in the Code *or* alternate protocols in the approved EHMP
- Stress intervention and possible management actions must be recorded in the approved EHMP



Facilities

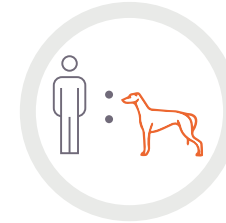
FENCES, KENNELS, YARDS

- Fences must be constructed to prevent greyhounds from being injured or escaping
- Minimum of two barriers between greyhounds and escape from the establishment
- Barriers must be at least 1.2m high
- 3–9sqm = single greyhound housing only, minimum of four breaks daily
- 10sqm of housing required per each additional greyhound
- Weatherproof area required for all outdoor pens/yards
- 15sqm whelping area can include adjoining exercise or day yards



Records

- Greyhound record to be a complete health history for each greyhound
- Individual greyhound records required from birth
- Greyhounds being sold, given away or moved from an establishment must be accompanied by their up-to-date greyhound record
- Greyhound record to follow a greyhound each time it moves between establishments or Persons in Charge



Staffing and staff ratio

- Person in Charge is accountable for greyhound welfare and establishment management
- Establishments must have a sufficient number of suitably qualified or experienced staff to care for all greyhounds
- 1:50 ratio for greyhounds over 16 weeks of age and 1:25 thereafter
- 1:20 ratio for greyhounds under 16 weeks of age. This acknowledges the critical socialisation period for puppies (3-16 weeks)
- For 50 or less greyhounds, overnight monitoring (in person or remote) only required to care for whelping, sick or injured greyhounds
- Overnight monitoring (in person or remote) only required for all establishments with 51 or more greyhounds
- Mandatory training for all **new** industry participants, training for existing participants as required



Establishment and Health Management Plan (EHMP)

- Flexibility for participants to develop their own protocols and procedures
- Mandatory for all Persons in Charge keeping racing greyhounds
- If the Code's minimum requirements are not adopted, alternative protocols for exercise, socialisation, enrichment and rehoming requirements can be outlined in the EHMP
- Does not include training protocols
- Approved by a veterinary practitioner initially and then every three years after
- Submitted to Greyhound Racing Victoria (GRV)
- Reviewed annually by Person in Charge

For more information visit

animalwelfare.vic.gov.au

The Code sets out minimum welfare standards, participants may seek to exceed these requirements at their establishments

A better place for greyhounds

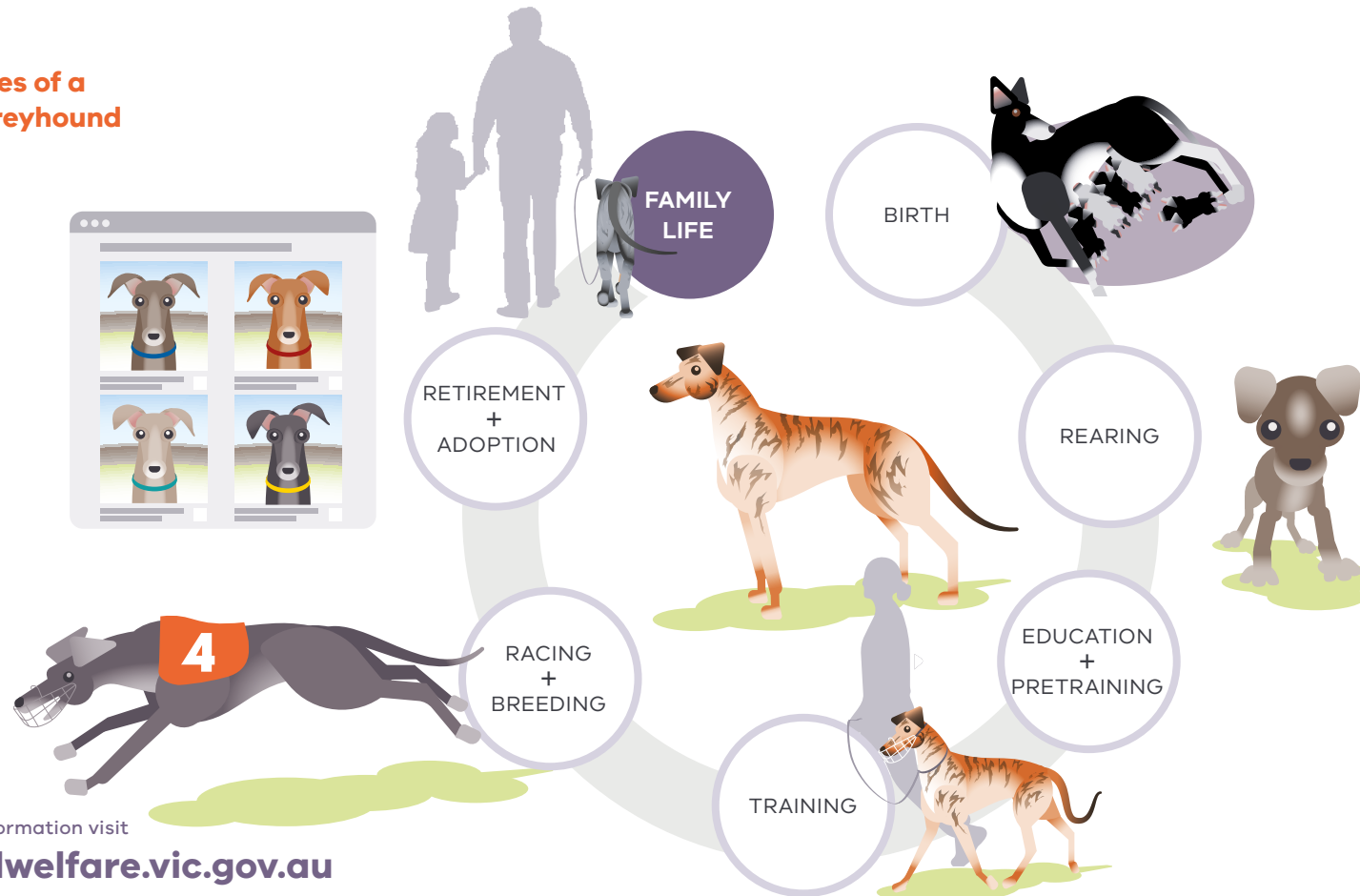
ANIMAL WELFARE VICTORIA

NEW CODE OF PRACTICE FOR THE KEEPING OF RACING GREYHOUNDS

Timeline



Life stages of a racing greyhound



For more information visit

animalwelfare.vic.gov.au