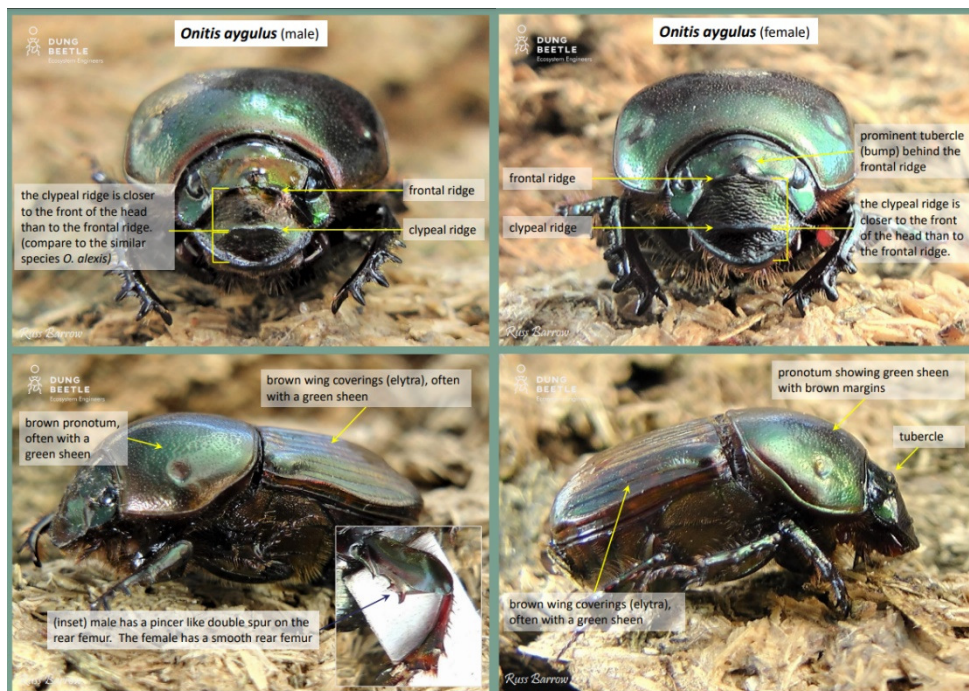


## Onitis aygulus (introduced)



**Size:** 20-25 mm

**Colour:** A two-toned beetle. Pronotum is dark brown with a copper or green sheen and wing covers are a lighter brown.

**Horns:** Females have a small bump on the back of their head.

**Active seasons:** Spring to autumn.

**Flight time:** dusk and dawn.

**Distribution in Australia:** Found in Western Victoria, SA, NSW and southern WA.

**Similar species:** *Onitis alexis* is similar but smaller on average (13-20 mm) and males have a single spur on hind legs compared to the double spur in *O. aygulus* (above).

**South West Prime Lamb Group (SWPLG) demonstrations:** *O. aygulus* have been trapped at Cashmore and Hamilton in low numbers.

**Lifecycle:** *O. aygulus* buries its nest to a depth of 16 cm, comprising of brood 'sausages' each with up to eight eggs.

**Dung burial:** 5-16 cm deep.

**Establishment of *O. aygulus*:** Beetles can be introduced as starter colonies. A link to suppliers can be found below.

### Acknowledgments & references:

Photos by Russ Barrow- Dung Beetle Ecosystem Engineer (DBEE) Project [www.dungbeetles.com.au](http://www.dungbeetles.com.au)

Dung Beetle Ecosystems Engineers (DBEE) project [www.dungbeetles.com.au/species/onitis-aygulus](http://www.dungbeetles.com.au/species/onitis-aygulus)

Dung Beetles in the South West of Western Australia <https://www.dungbeetlessouthwest.org.au/onitis-aygulus>

Dung beetle suppliers: <https://www.dungbeetles.com.au/livestock-producers/buying-dung-beetles>

CMA regions that *O. aygulus* is known to be present (Source: DBEE). NB Absence may reflect a lack of collecting efforts.