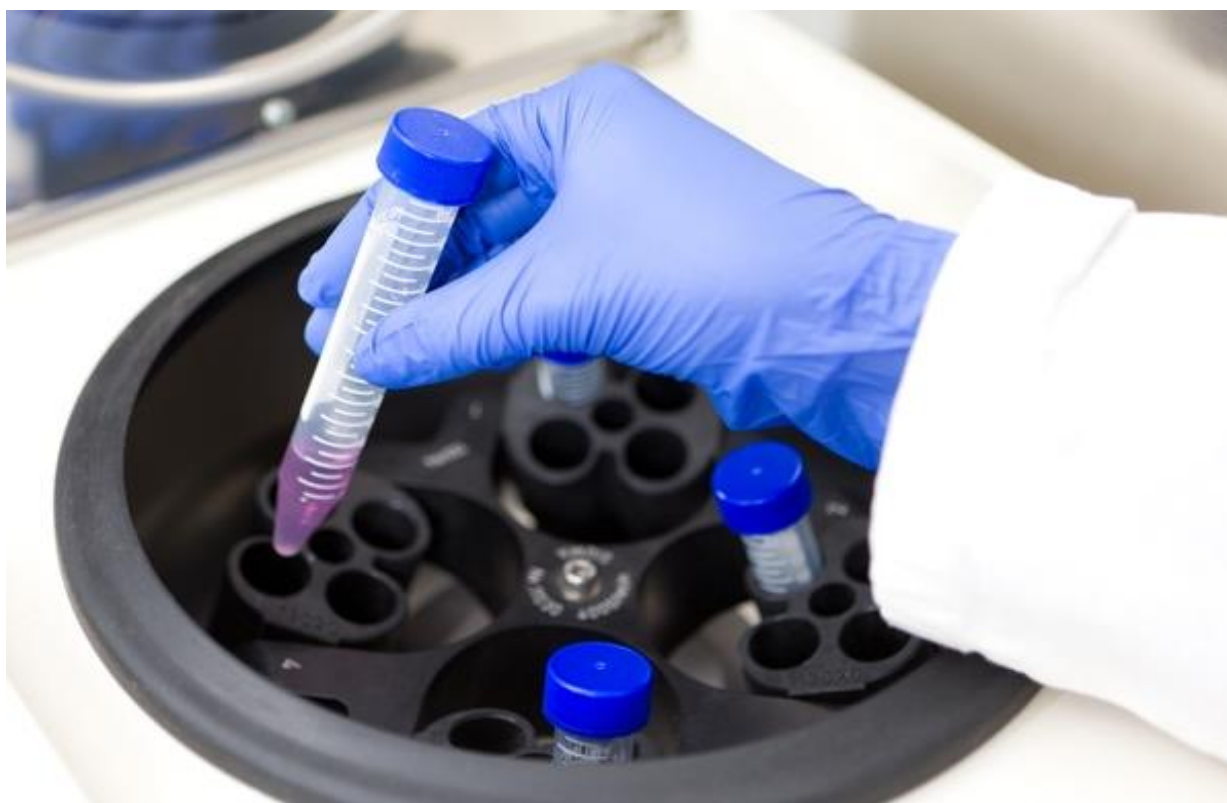


Summary of statistics of animal use in research and teaching, Victoria

1 January 2013 to 31 December 2013

Report number 31



© The State of Victoria Department of Economic Development, Jobs, Transport and Resources 2015



This work is licensed under a Creative Commons Attribution 3.0 Australia licence. You are free to re-use the work under that licence, on the condition that you credit the State of Victoria as author. The licence does not apply to any images, photographs or branding, including the Victorian Coat of Arms, the Victorian Government logo and the Department of Economic Development, Jobs, Transport and Resources logo. To view a copy of this licence, visit <http://creativecommons.org/licenses/by/3.0/au/deed.en>

ISBN 2203-4196

Accessibility

If you would like to receive this publication in an alternative format, please telephone DEDJTR Customer Service Centre 136 186, via the National Relay Service on 133 677, www.relayservice.com.au. This document is also available on the internet at www.economicdevelopment.vic.gov.au

Disclaimer

This publication may be of assistance to you but the State of Victoria and its employees do not guarantee that the publication is without flaw of any kind or is wholly appropriate for your particular purposes and therefore disclaims all liability for any error, loss or other consequence which may arise from you relying on any information in this publication.

Contents

1. Introduction	2
<hr/>	
2. Number of animals used	3
<hr/>	
3. Aspects of animal use	5
<hr/>	
4. Specified animals in breeding colonies	7
<hr/>	
5. Scientific procedure licences and projects	8
<hr/>	

1. Introduction

The following figures and tables present summary data on animal use in research and teaching in Victoria. The 2013 data are set in the context of previous years' data to demonstrate use trends over time. Detailed data are available in earlier publications of *Statistics of animal use in research and teaching, Victoria*.

The Biosecurity branch of the Department of Economic Development, Jobs, Transport and Resources collects data from all institutions licensed under the *Prevention of Cruelty to Animals Act 1986* to use animals in research and teaching in Victoria. Each project involving animal use must be approved by an Animal Ethics Committee. For each year of the project, an 'Animal Use Return' form describing the animal use must be submitted (Regulation 100 of the Prevention of Cruelty to Animals Regulations 2008).

The Act defines a 'specified animal' as a mouse, rat or rabbit that is not bred in its native habitat, or a guinea pig, or non-human primate (that is, laboratory animals).

2. Number of animals used

Figure 1. Total animal use, 2004–13

The total number of animals used in research and training in 2013 was 1 084 507. The high totals in 2004 and 2011 are explained by single poultry projects that used 2 177 147 and 1 000 000 birds respectively.

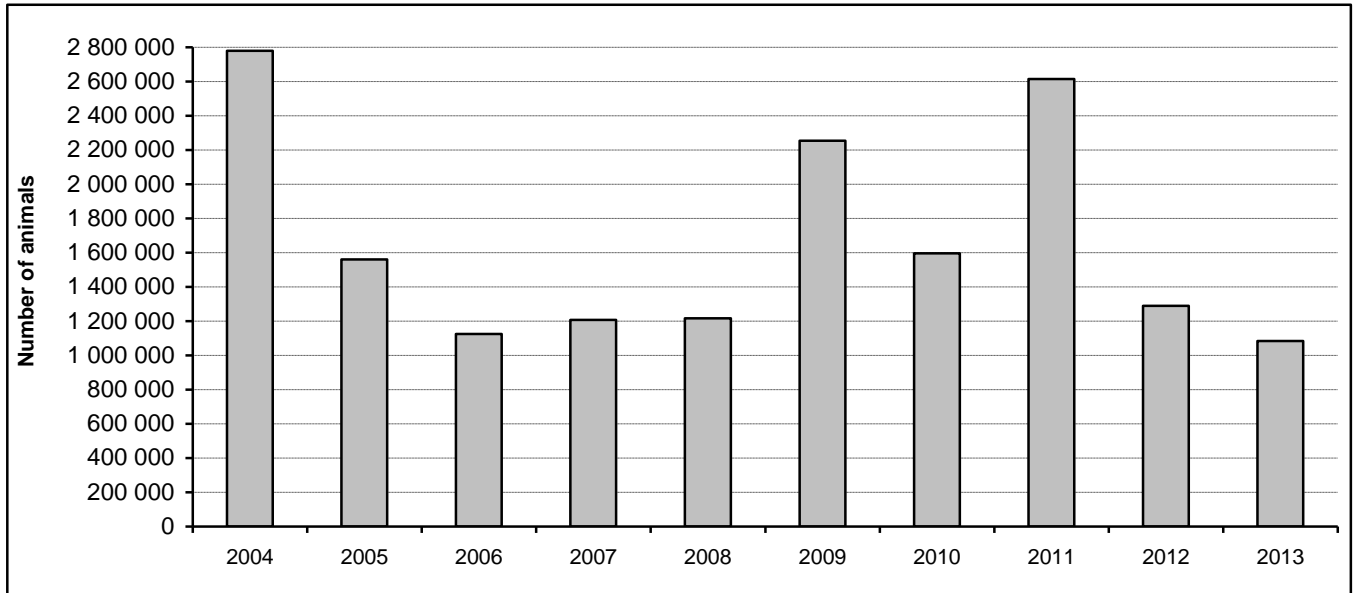


Figure 2. Specified mouse use, 2004–13

A total of 484 206 specified mice were used in 2013, compared with the long term average of 417 879.

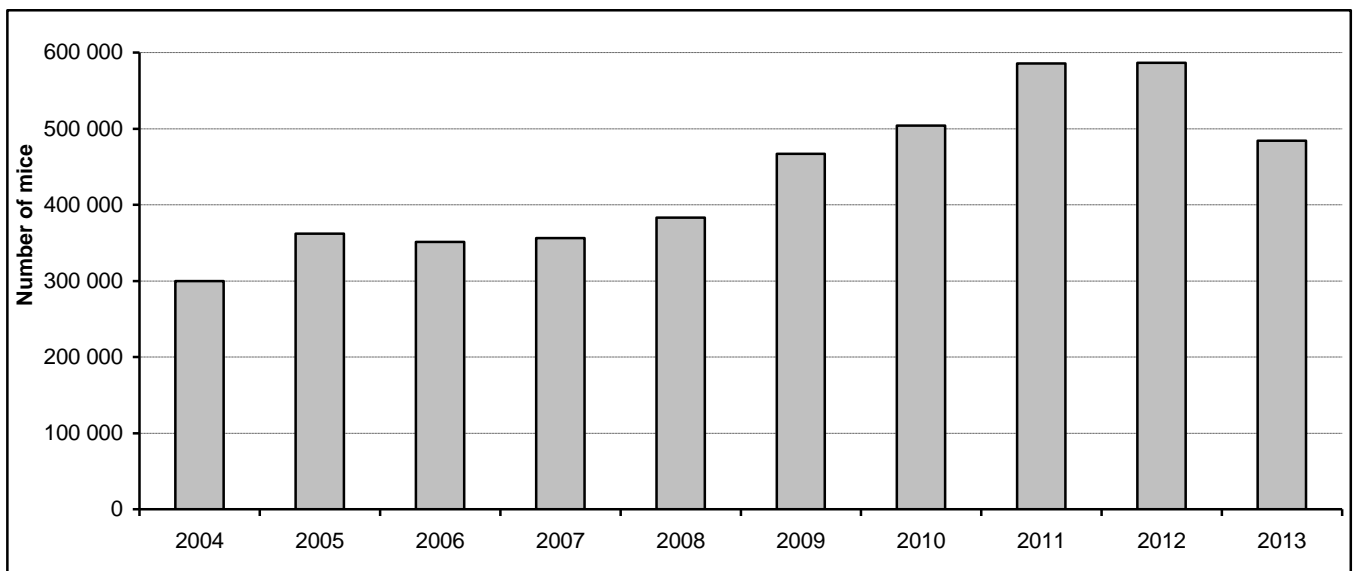


Figure 3. Specified animal use excluding mice and non-human primates, 2004–13

A total of 31 773 specified rats, guinea pigs and rabbits were used in 2013, compared with the long term average of 45 045. It comprised 26 251 rats (long term average of 34 551), 3856 guinea pigs (long term average of 6837) and 1666 rabbits (long term average of 2274).

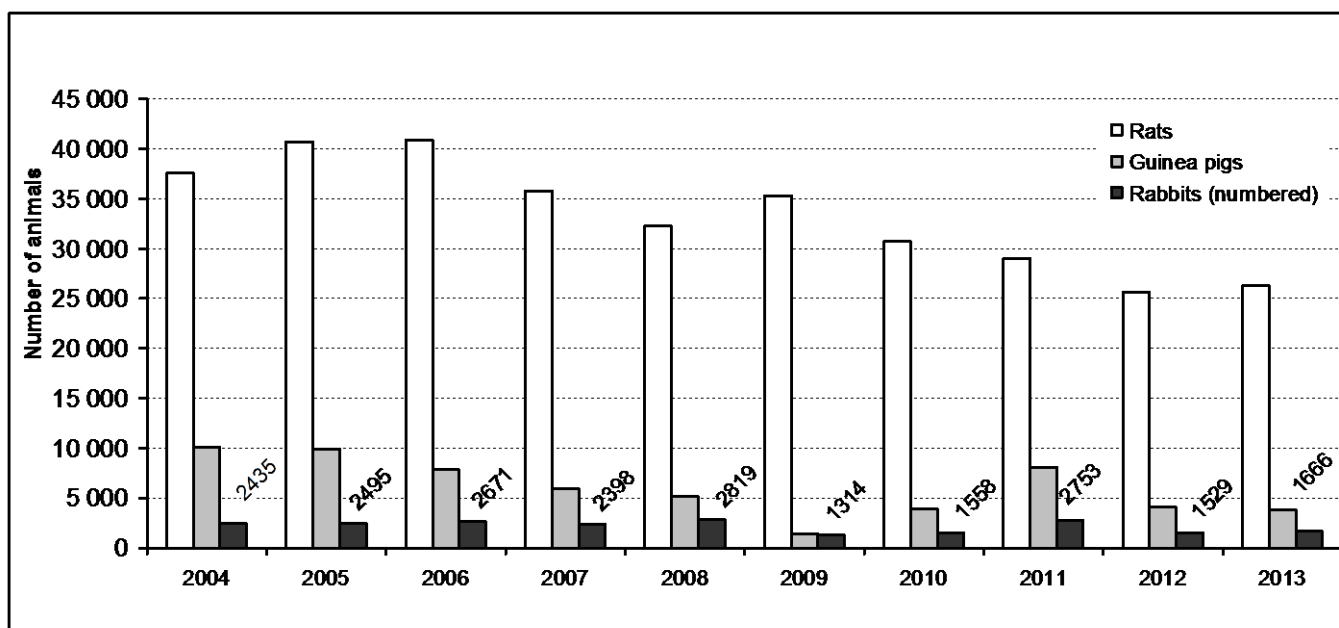
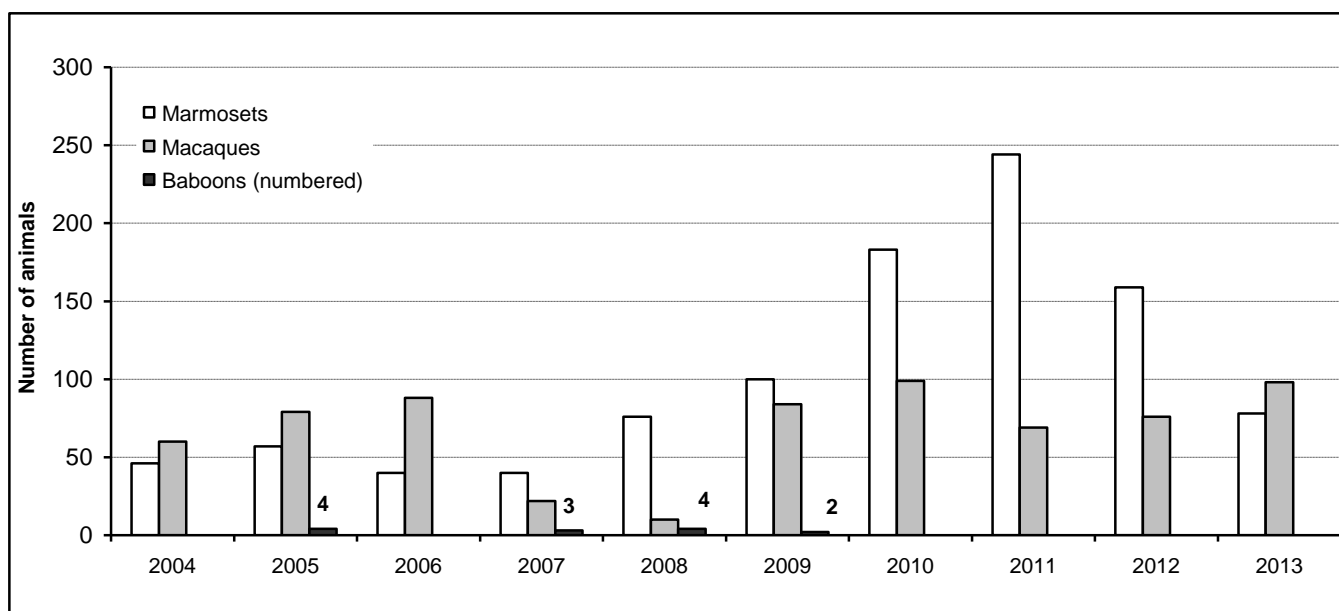


Figure 4. Specified primate use, 2004–13

A total of 176 non-human primates were used in 2013, compared with the long term average of 172. It comprised 78 marmosets (long term average of 105) and 98 macaques (long term average of 65). In 2011, the above average number of marmosets was due to two projects using 145 animals in studies of social behaviour.



3. Aspects of animal use

Figure 5. Animal use by project mission for the past five years (rounded)

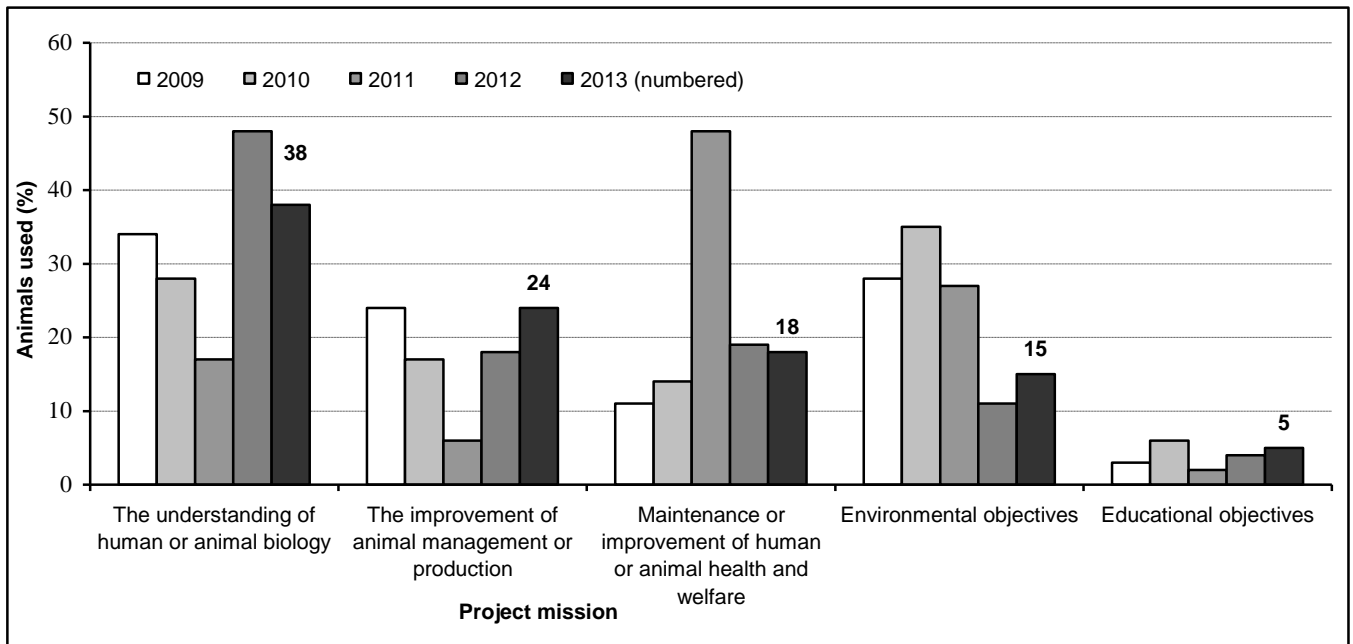


Figure 6. Animals used in genetic modification procedures, 2004–13

A total of 289 projects used 94 051 animals in genetic modification in 2013.

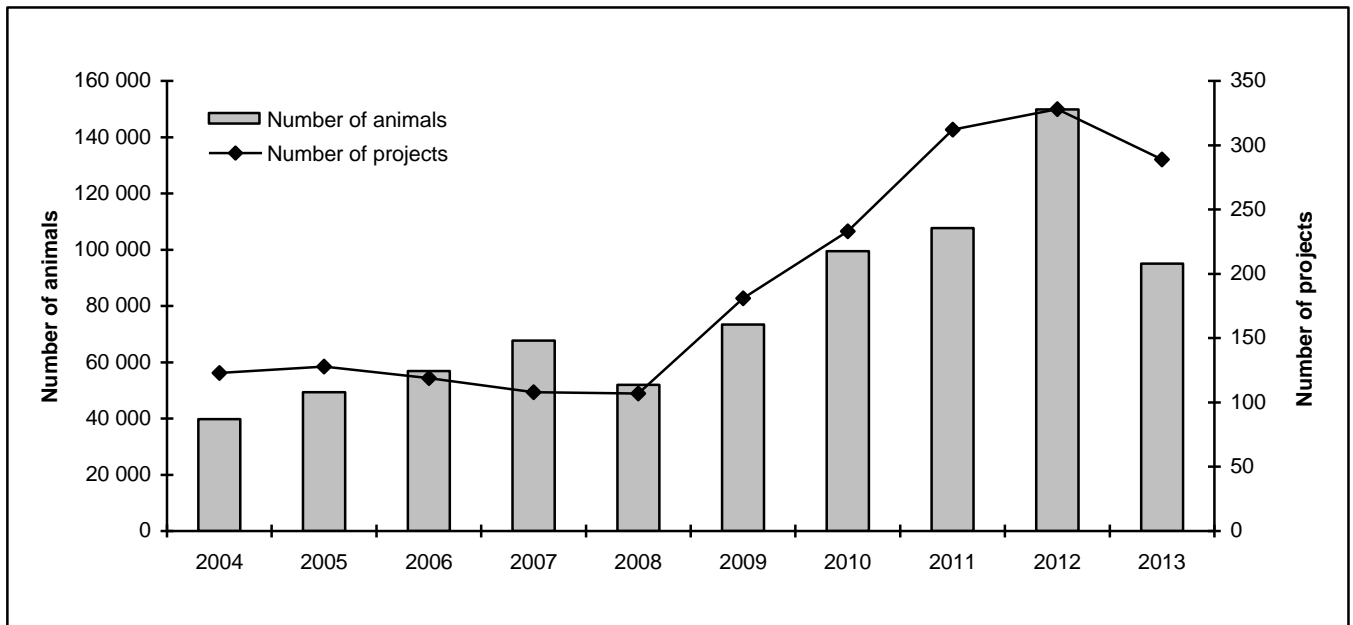


Figure 7. Animal use for the past five years, by procedure category (rounded)

In 2009 the large proportion of animals in physiological challenge procedures reflected relatively high impact analyses of large numbers of fish in commercial fisheries.

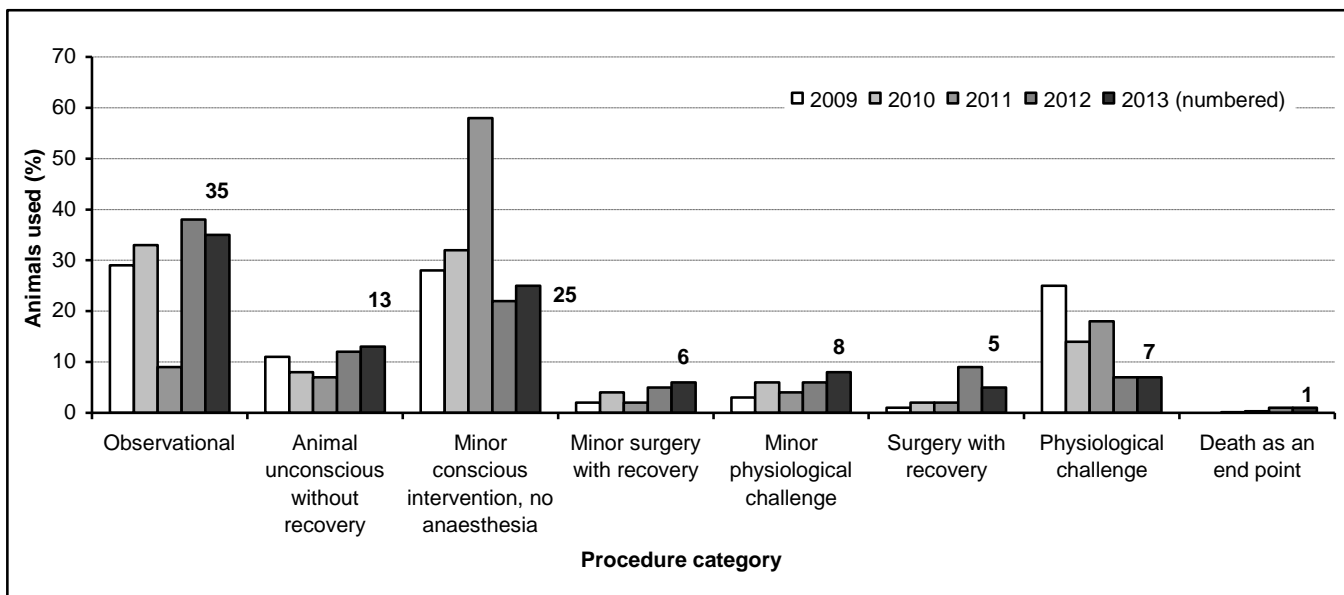
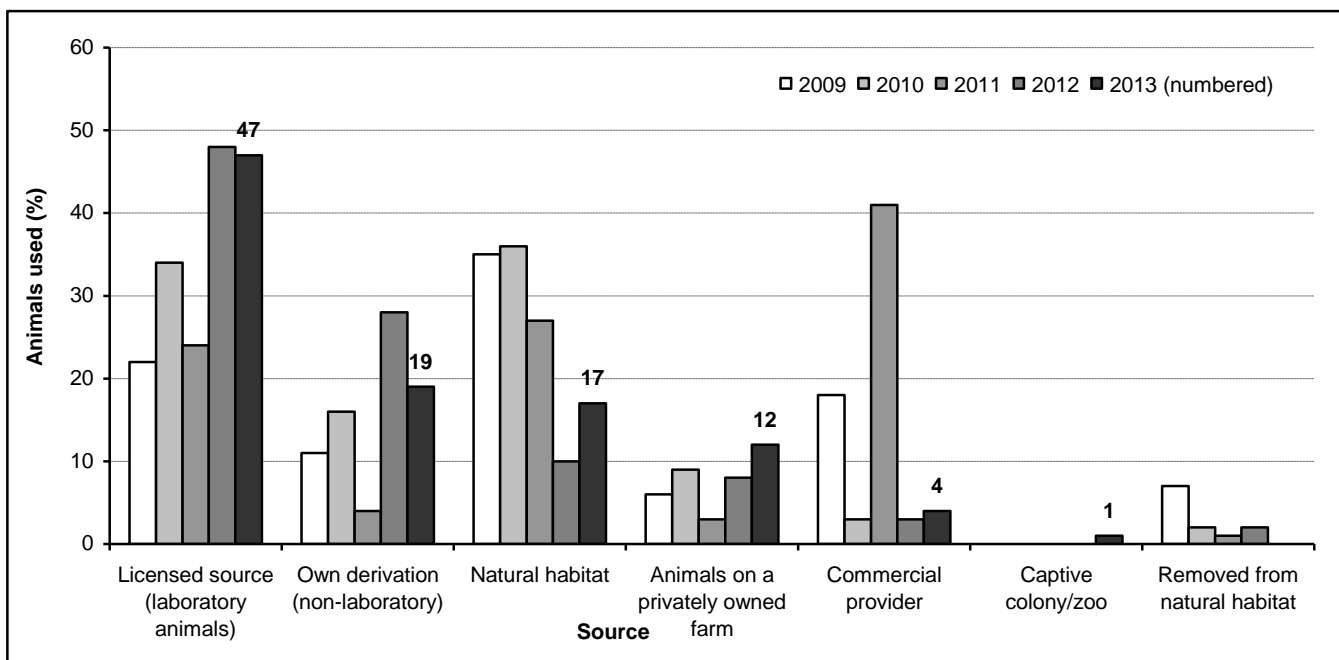


Figure 8. Animal use for the past five years, by source (excluding sources representing less than 1 per cent of animal use)



4. Specified animals in breeding colonies

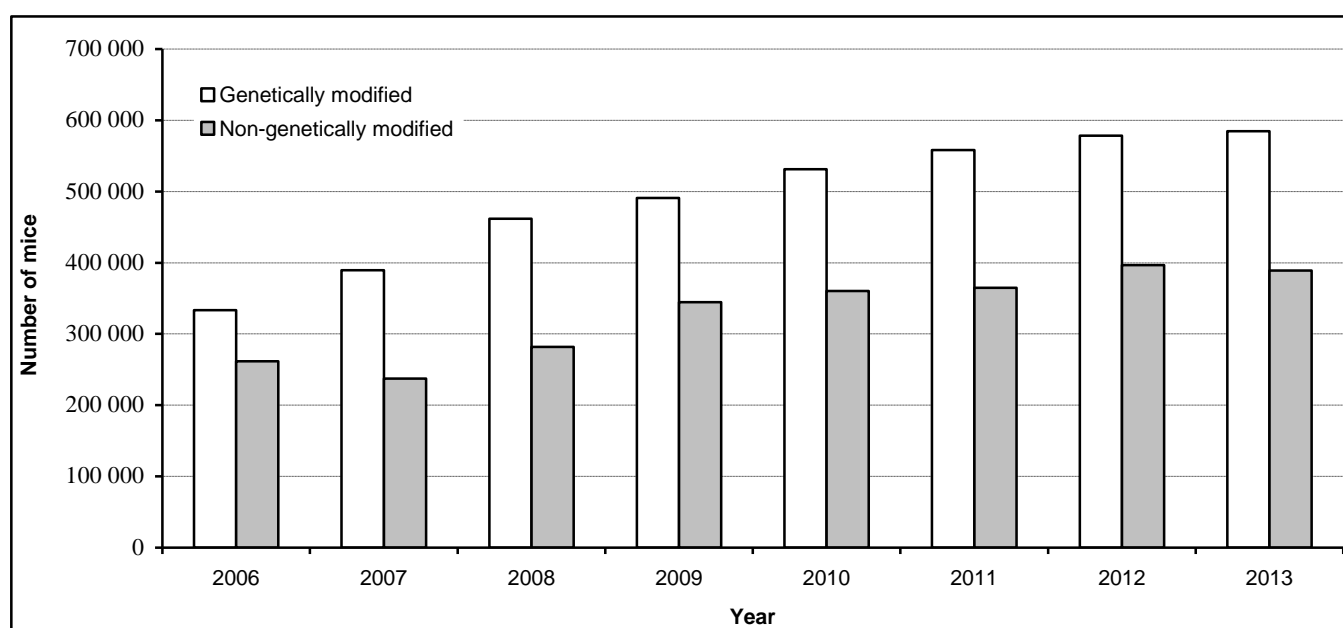
Table 1: Specified non-genetically modified animals in breeding colonies for scientific procedures, 2006–13 (including numbers not in figures 1, 2, 3 and 4)

Type of animal (non-genetically modified)	Year							
	2006	2007	2008	2009	2010	2011	2012	2013
Guinea pigs	2604	3638	1142	1087	1153	388	320	244
Macaques	159	203	341	225	243	250	244	226
Marmosets	173	159	135	166	177	156	146	273
Mice	261 697	237 246	281 875	344 823	360 185	365 009	396 710	389 049
Rabbits	638	527	504	515	445	489	214	197
Rats	31 391	33 407	42 558	56 993	52 786	48 543	31 886	33 308
Total	296 662	275 180	326 555	403 809	414 989	414 835	429 520	423 297

Table 2: Specified genetically modified animals in breeding colonies for scientific procedures, 2006–13 (including numbers not in figures 1, 2, 3 and 6)

Type of animal (genetically modified)	Year							
	2006	2007	2008	2009	2010	2011	2012	2013
Mice	333 266	389 632	461 745	490 962	531 098	558 293	578 240	584 660
Rats	1031	13 120	9304	1923	1146	1744	1381	1992
Total	334 297	394 201	471 049	492 885	532 244	560 037	579 621	586 652

Figure 9. Breeding of specified mice, 2006–13 (including numbers not in figures 1, 2 and 6)



5. Scientific procedure licences and projects

Table 3. Number of projects and number of procedure licences, 2004–13 (including only licences and projects that used animals).

	Year									
	2004	2005	2006	2007	2008	2009	2010	2011	2012	2013
Number of projects	2176	2458	2386	2358	2455	2673	2931	3010	3048	2940
Number of licences for procedures using animals	97	99	104	110	107	111	115	123	127	130
Number of projects per licence	22	25	23	21	23	24	25	24	24	23

Table 4. Number of animals used and number of licences, 2004–13 (including only licences for projects that used animals).

Figures in parentheses exclude the anomalous poultry projects in 2004 and 2011.

	Year									
	2004	2005	2006	2007	2008	2009	2010	2011	2012	2013
Number of animals used	2 780 290 (603 043)	1 560 340	1 125 487	1 207 360	1 216 393	2 255 076	1 595 375	2 614 472 (1 614 472)	1 288 810	1 084 507
Number of licences for procedures using animals	97	99	104	110	107	111	115	123	127	130
Number of animals used per licence	28 663 (6 217)	15 761	12 066	10 976	11 368	20 316	13 873	21 256 (13 126)	10 148	8342

Table 5. Number of animals used and number of projects, 2004–13 (including only projects that used animals)

Figures in parentheses exclude the anomalous poultry projects in 2004 and 2011.

	Year									
	2004	2005	2006	2007	2008	2009	2010	2011	2012	2013
Number of animals used	2 780 290 (603 043)	1 560 340	1 125 487	1 207 360	1 216 393	2 255 076	1 595 375	2 614 472 (1 614 472)	1 288 810	1 084 507
Number of projects	2176 (2175)	2458	2386	2358	2455	2673	2931	3010 (3009)	3048	2940
Number of animals used per project	1278 (277)	635	472	512	495	844	544	869 (537)	423	369

Customer Service Centre **136 186**

www.economicdevelopment.vic.gov.au