

Summary of statistics of animal use in research and teaching, Victoria

1 January 2015 to 31 December 2015
Report number 33



© The State of Victoria Department of Economic Development, Jobs, Transport & Resources 2016

This work is licensed under a Creative Commons Attribution 3.0 Australia licence. You are free to re-use the work under that licence, on the condition that you credit the State of Victoria as author. The licence does not apply to any images, photographs or branding, including the Victorian Coat of Arms, the Victorian Government logo and the Department of Economic Development, Jobs, Transport & Resources logo. To view a copy of this licence, visit <http://creativecommons.org/licenses/by/3.0/au/deed.en>

ISSN 2203-4196

Accessibility

If you would like to receive this publication in an alternative format, please telephone DEDJTR Customer Service Centre 136 186, via the National Relay Service on 133 677, www.relayservice.com.au. This document is also available on the internet at www.agriculture.vic.gov.au

Disclaimer

This publication may be of assistance to you but the State of Victoria and its employees do not guarantee that the publication is without flaw of any kind or is wholly appropriate for your particular purposes and therefore disclaims all liability for any error, loss or other consequence which may arise from you relying on any information in this publication.

Contents

1. Introduction	4
2. Number of animals used	5
3. Aspects of animal use	7
4. Specified animals in breeding colonies	9
5. Scientific procedure licences and projects	10

1. INTRODUCTION

The Secretary of the Department of Economic Development, Jobs, Transport & Resources receives annual summary data from all licence holders using animals in research and teaching in Victoria under the *Prevention of Cruelty to Animals Act 1986* (the Act). An 'Animal Use Return' form must be submitted annually for each project using animals, in accordance with Regulation 100 of the Prevention of Cruelty to Animals Regulations 2008. Each project involving animal use must be approved by an Animal Ethics Committee.

This summary report presents a summary of animal use in research and teaching in Victoria. The 2015 data are set in the context of previous years' data to demonstrate trends over time.

The Act defines a 'specified animal' as a mouse, rat or rabbit that is not bred in its native habitat, or a guinea pig, or non-human primate (that is, laboratory animals).

Further information and the full report, *Statistics of animal use in research and teaching, Victoria (report number 33)*, are available at www.agriculture.vic.gov.au/ART.

2. NUMBER OF ANIMALS USED

Figure 1. Total animal use, 2006–15

The total number of animals used in research and teaching in 2015 was 1 068 034. The high total for 2011 is explained by a single poultry project that used 1 000 000 birds.

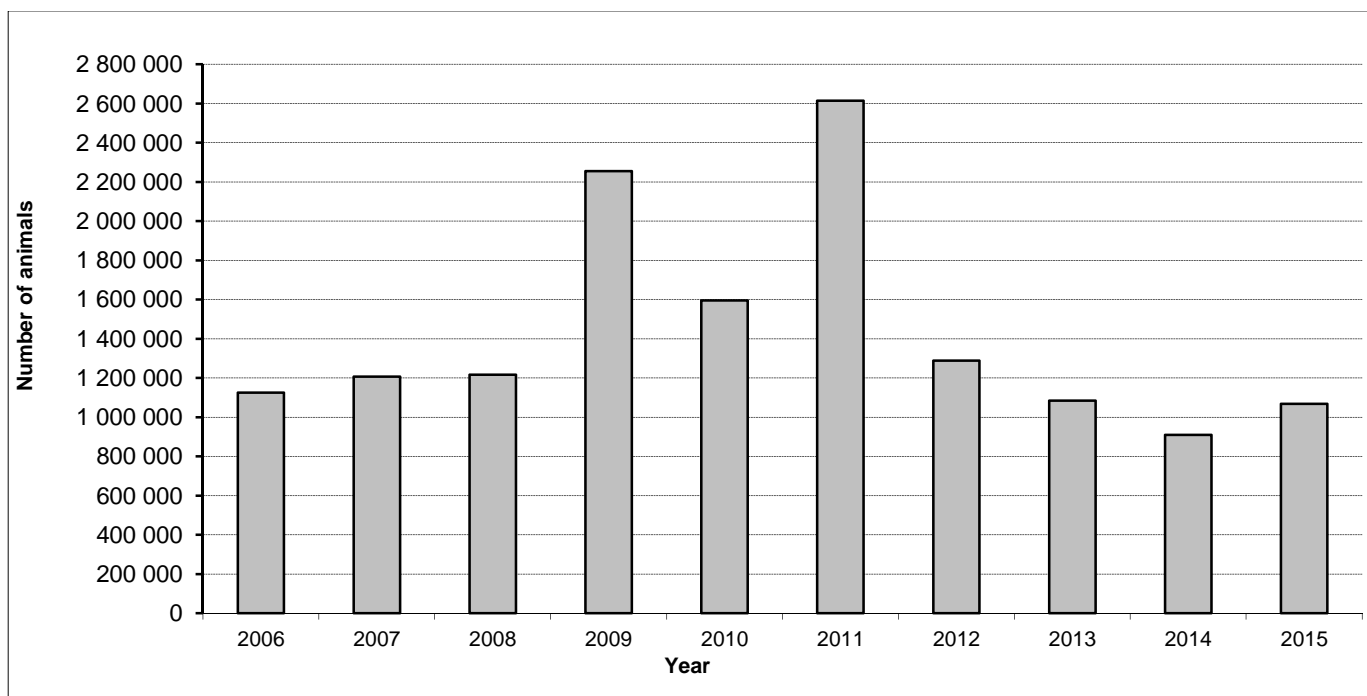


Figure 2. Specified mouse use, 2006–15

A total of 409 211 specified mice were used in 2015, compared with the long term average of 456 131.

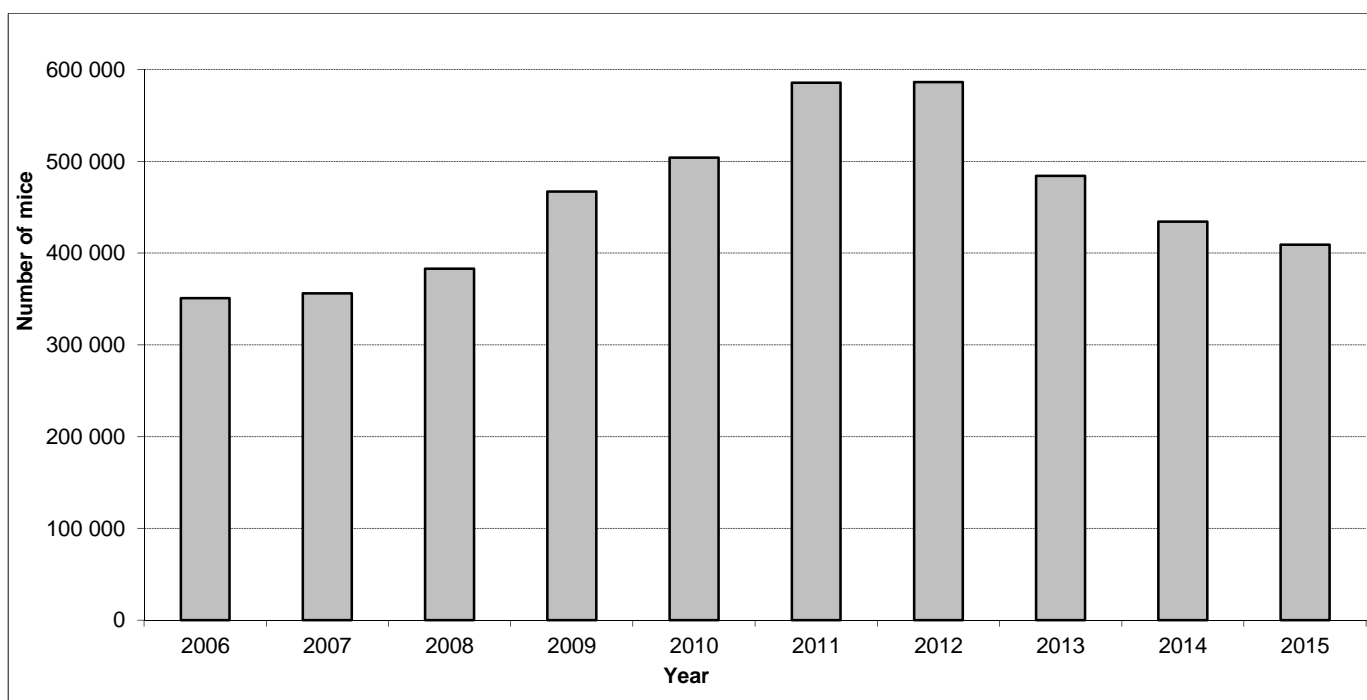


Figure 3. Specified animal use excluding mice and non-human primates, 2006–15

A total of 29 418 specified rats, guinea pigs and rabbits were used in 2015, compared with the long term average of 37 564. It comprised 23 583 rats (long term average of 30 612), 4727 guinea pigs (long term average of 5026) and 1108 rabbits (long term average of 1927).

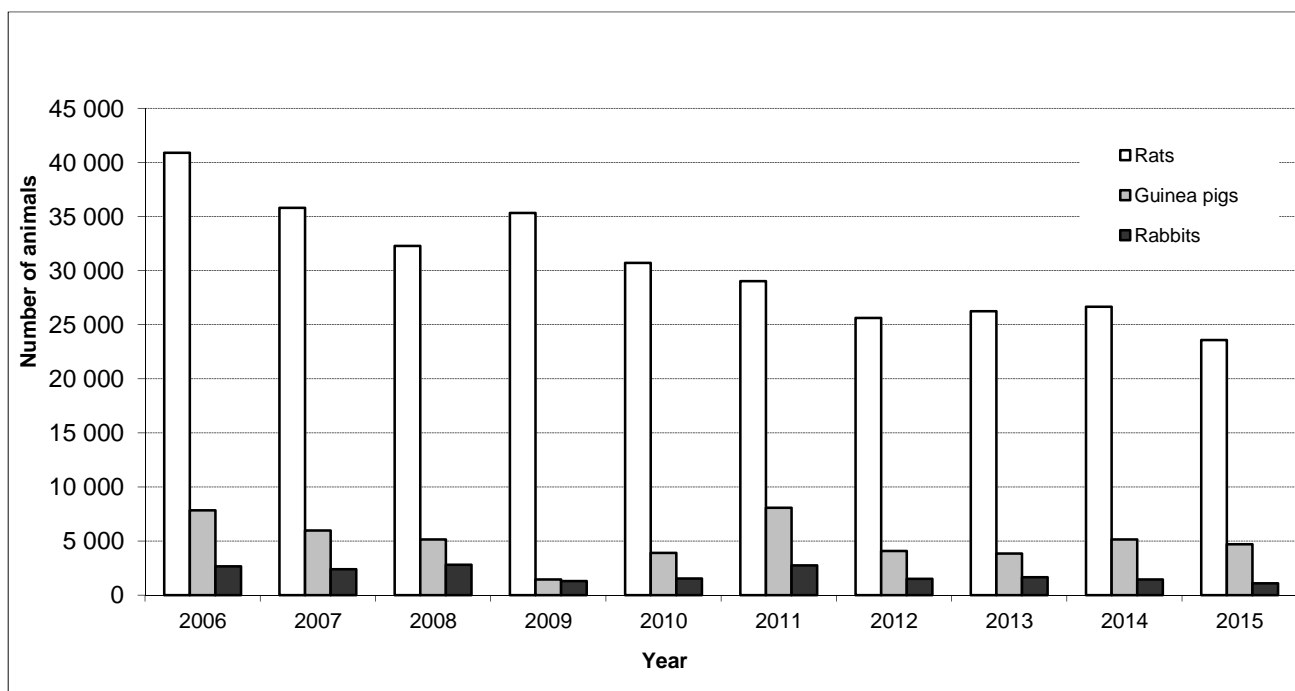
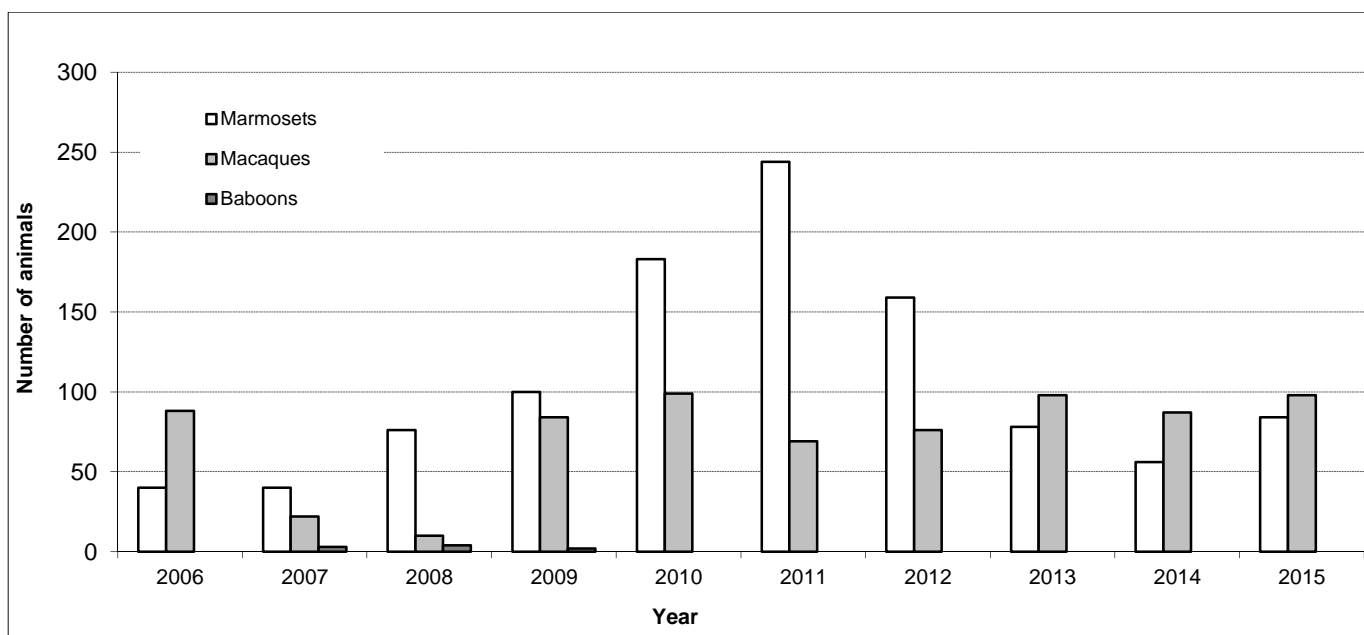


Figure 4. Specified primate use, 2006-15

A total of 182 non-human primates were used in 2015, compared with the long term average of 180. It comprised 84 marmosets (long term average of 106) and 98 macaques (long term average of 73). In 2011, the above average number of marmosets was due to two projects using 145 animals in studies of social behaviour.



3. ASPECTS OF ANIMAL USE

Figure 5. Animal use by project mission for the past five years (rounded)

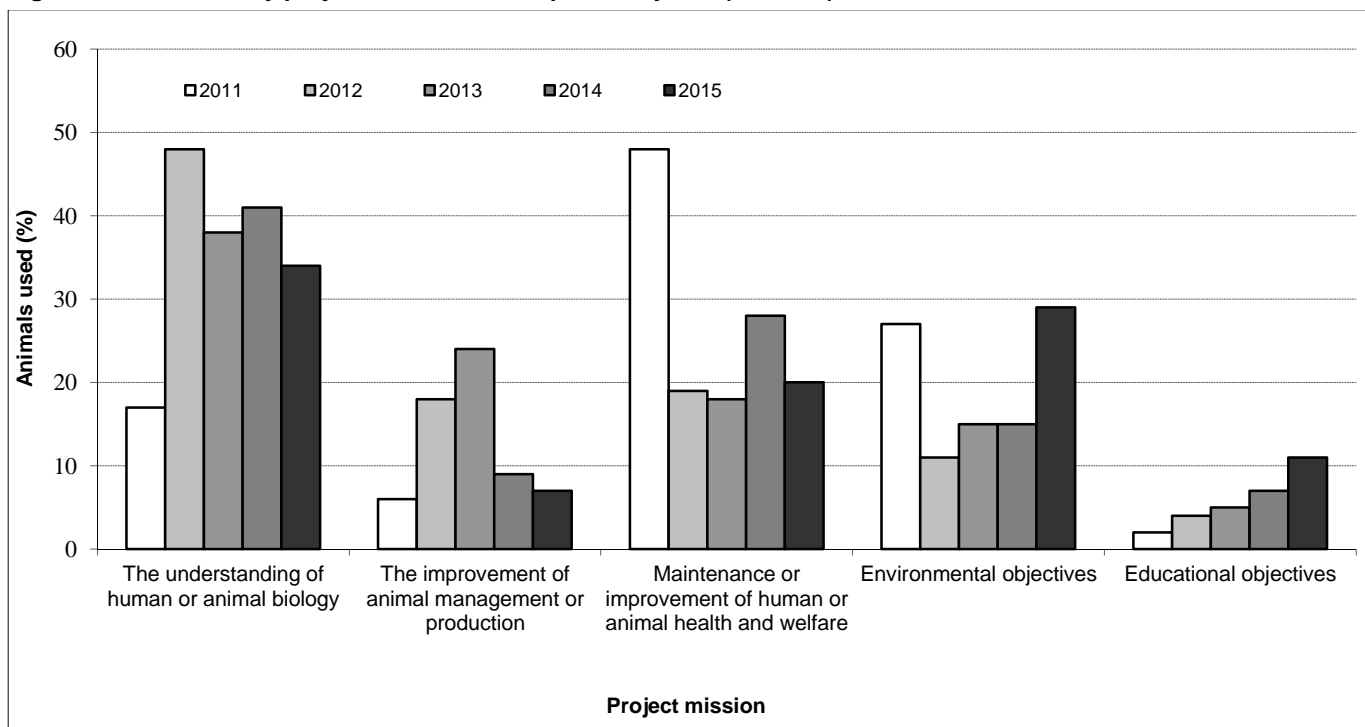


Figure 6. Animals used in genetic modification procedures, 2006–15

A total of 298 projects used 97 223 animals in genetic modification in 2015.

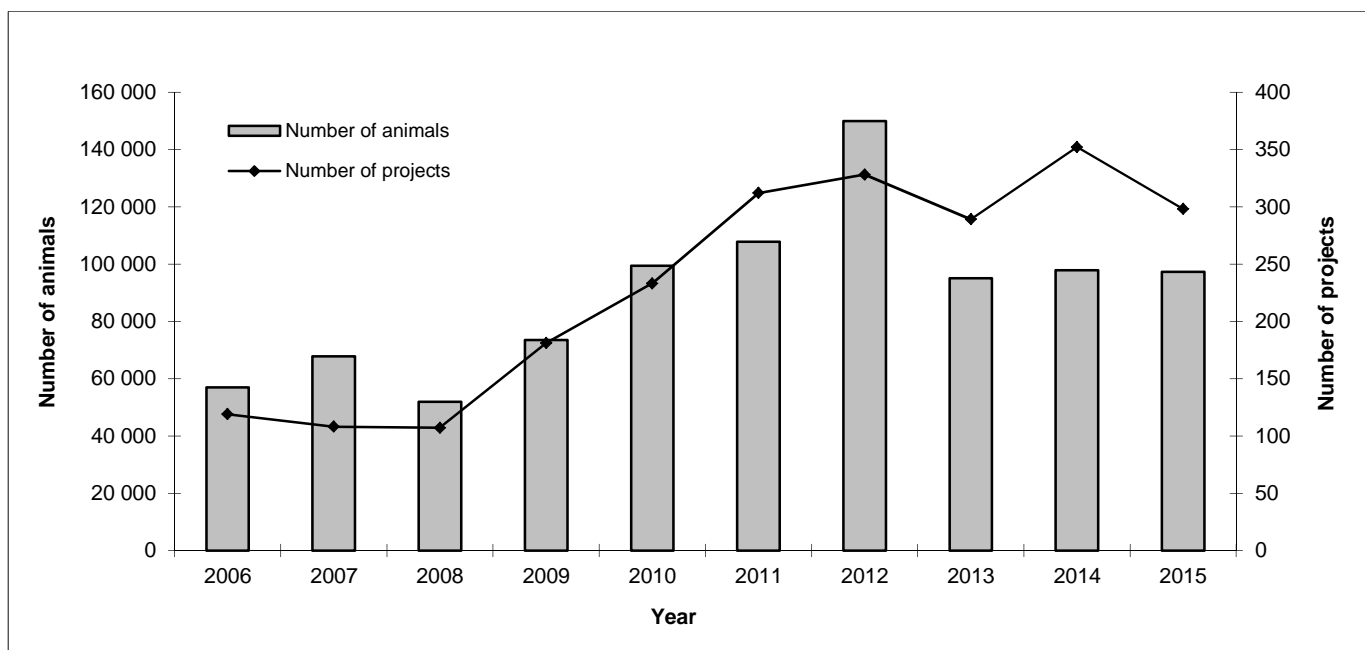


Figure 7. Animal use for the past five years, by procedure category (rounded)

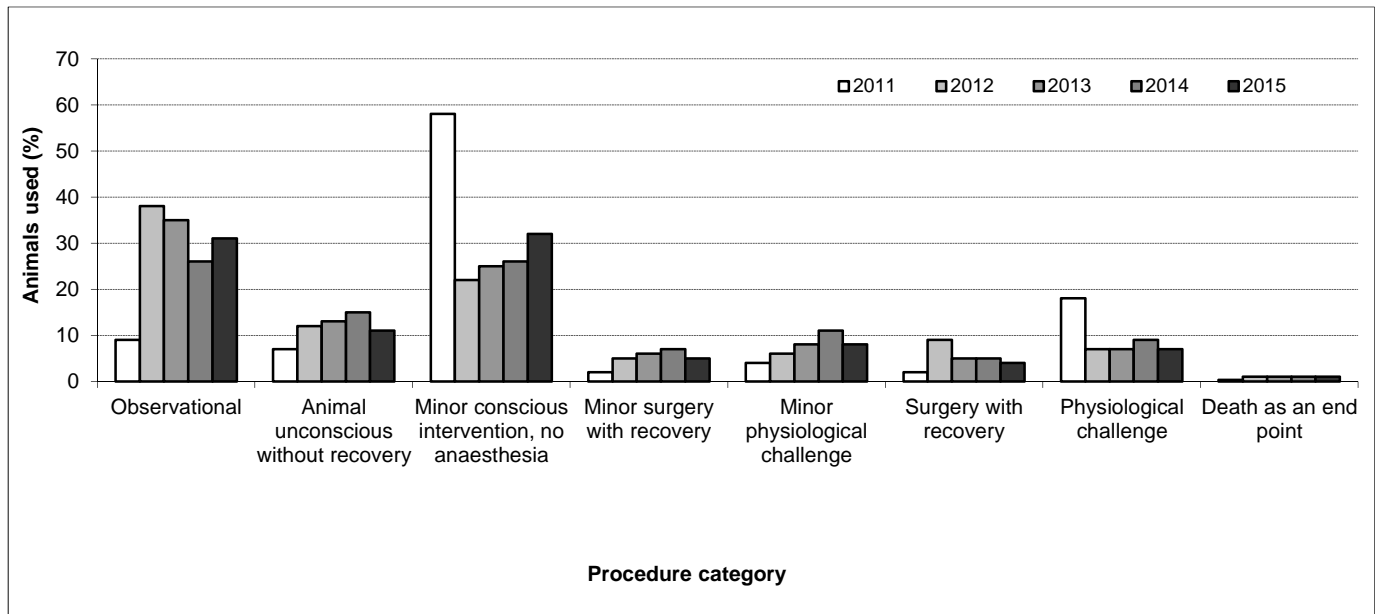
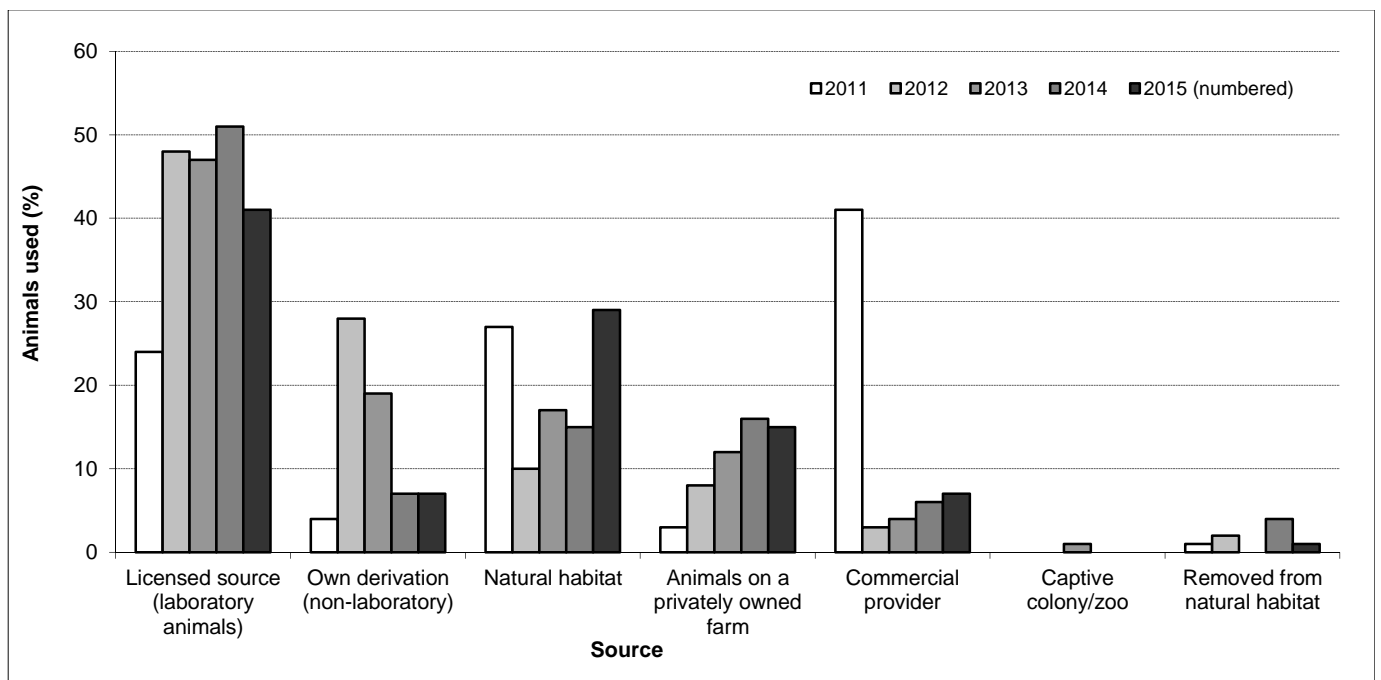


Figure 8. Animal use for the past five years, by source (excluding sources representing less than 1 per cent of animal use)

The high proportion of commercially provided animals in 2011 is explained by single poultry project that used 1 000 000 birds.



4. SPECIFIED ANIMALS IN BREEDING COLONIES

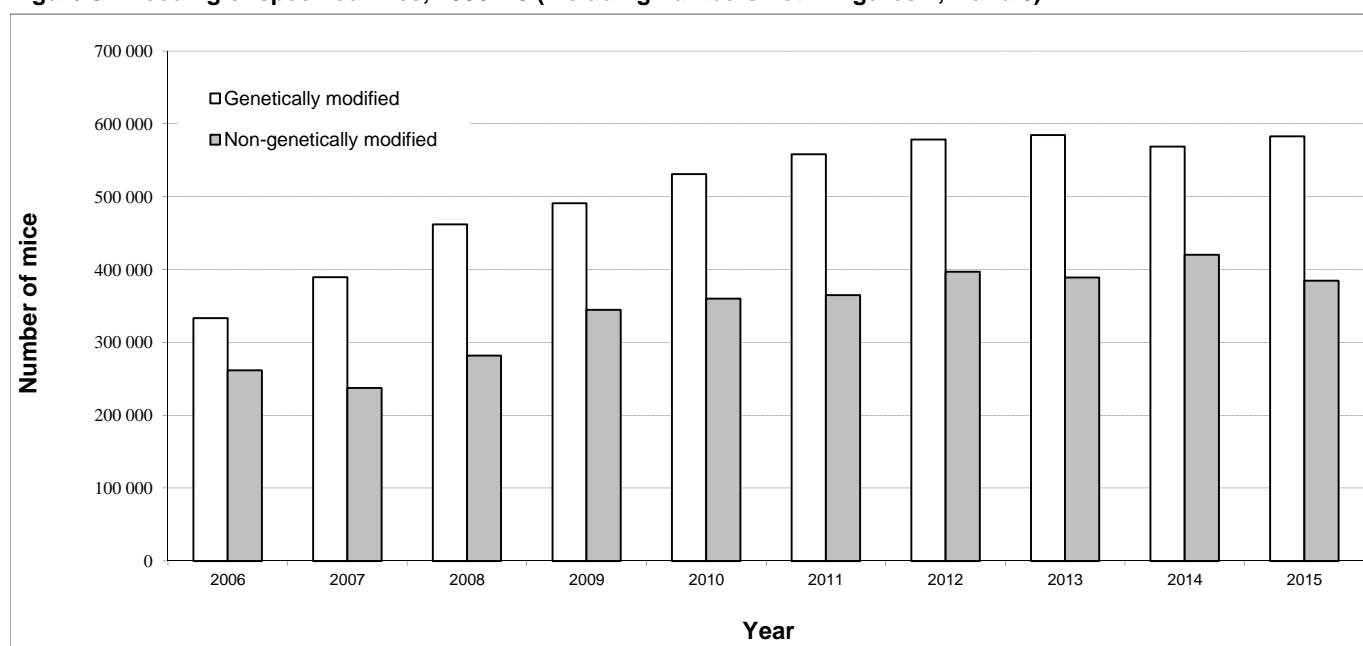
Table 1. Specified non-genetically modified animals in breeding colonies for scientific procedures, 2006–15 (including numbers not in figures 1, 2, 3 and 4)

Type of animal	Year									
	2006	2007	2008	2009	2010	2011	2012	2013	2014	2015
Guinea pigs	2604	3638	1142	1087	1153	388	320	244	345	294
Macaques	159	203	341	225	243	250	244	226	263	282
Marmosets	173	159	135	166	177	156	146	273	305	440
Mice	261 697	237 246	281 875	344 823	360 185	365 009	396 710	389 049	420 126	384 762
Rabbits	638	527	504	515	445	489	214	197	133	179
Rats	31 391	33 407	42 558	56 993	52 786	48 543	31 886	33 308	25 546	23 744
Total	296 662	275 180	326 555	403 809	414 989	414 835	429 520	423 297	446 718	409 701

Table 2. Specified genetically modified animals in breeding colonies for scientific procedures, 2006–15 (including numbers not in figures 1, 2, 3 and 6)

Type of animal	Year									
	2006	2007	2008	2009	2010	2011	2012	2013	2014	2015
Mice	333 266	389 632	461 745	490 962	531 098	558 293	578 240	584 660	568 495	582 925
Rats	1031	13 120	9304	1923	1146	1744	1381	1992	4271	2714
Total	334 297	394 201	471 049	492 885	532 244	560 037	579 621	586 652	572 766	585 639

Figure 9. Breeding of specified mice, 2006–15 (including numbers not in figures 1, 2 and 6)



5. SCIENTIFIC PROCEDURE LICENCES AND PROJECTS

Table 3. Number of projects and number of procedure licences, 2006–15 (including only licences and projects that used animals).

	Year									
	2006	2007	2008	2009	2010	2011	2012	2013	2014	2015
Number of projects	2386	2358	2455	2673	2931	3010	3048	2940	2950	3121
Number of licences for procedures using animals	104	110	107	111	115	123	127	130	133	137
Number of projects per licence	23	21	23	24	25	24	24	23	22	23

Table 4. Number of animals used and number of licences, 2006–15 (including only licences for projects that used animals).

Figures in parentheses exclude the anomalous poultry project in 2011.

	Year									
	2006	2007	2008	2009	2010	2011	2012	2013	2014	2015
Number of animals used	1 125 487	1 207 360	1 216 393	2 255 076	1 595 375	2 614 472 (1 614 472)	1 288 810	1 084 507	910 052	1 068 034
Number of licences for procedures using animals	104	110	107	111	115	123	127	130	133	137
Number of animals used per licence	12 066	10 976	11 368	20 316	13 873	21 256 (13 126)	10 148	8342	6842	7796

Table 5. Number of animals used and number of projects, 2006–15 (including only projects that used animals)

Figures in parentheses exclude the anomalous poultry project in 2011.

	Year									
	2006	2007	2008	2009	2010	2011	2012	2013	2014	2015
Number of animals used	1 125 487	1 207 360	1 216 393	2 255 076	1 595 375	2 614 472 (1 614 472)	1 288 810	1 084 507	910 052	1 068 034
Number of projects	2386	2358	2455	2673	2931	3010 (3009)	3048	2940	2950	3121
Number of animals used per project	472	512	495	844	544	869 (537)	423	369	308	342