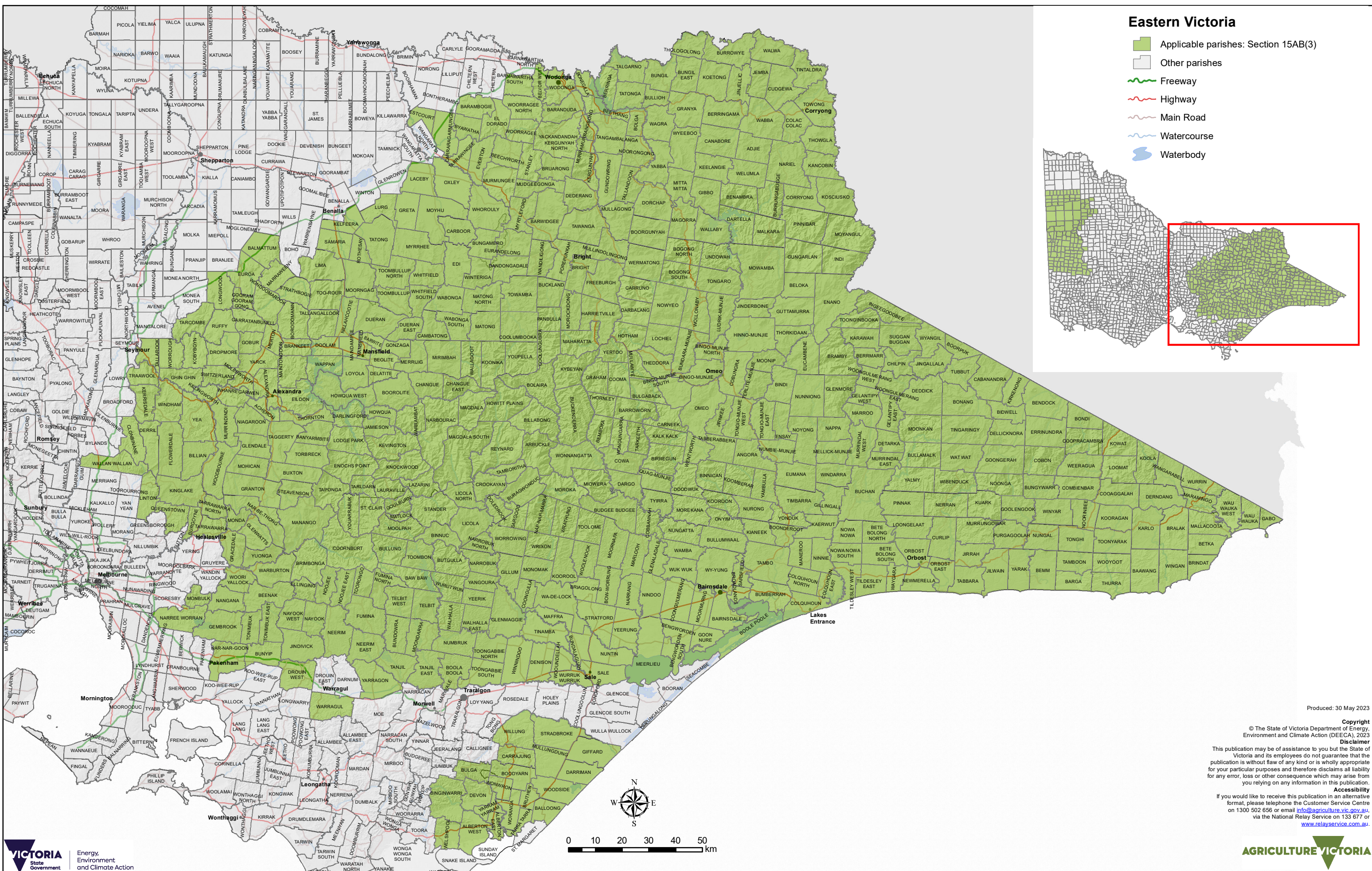


# Areas where large leghold traps for wild dogs can be used - Section 15AB(3) of the *Prevention of Cruelty to Animals Act 1986* -



- Eastern Victoria**
- Applicable parishes: Section 15AB(3)
  - Other parishes
  - Freeway
  - Highway
  - Main Road
  - Watercourse
  - Waterbody

Produced: 30 May 2023

**Copyright**  
© The State of Victoria Department of Energy, Environment and Climate Action (DEECA), 2023

**Disclaimer**  
This publication may be of assistance to you but the State of Victoria and its employees do not guarantee that the publication is without flaw of any kind or is wholly appropriate for your particular purposes and therefore disclaims all liability for any error, loss or other consequence which may arise from you relying on any information in this publication.

**Accessibility**  
If you would like to receive this publication in an alternative format, please telephone the Customer Service Centre on 1300 502 656 or email [info@agriculture.vic.gov.au](mailto:info@agriculture.vic.gov.au), via the National Relay Service on 133 677 or [www.relay.vic.gov.au](http://www.relay.vic.gov.au).