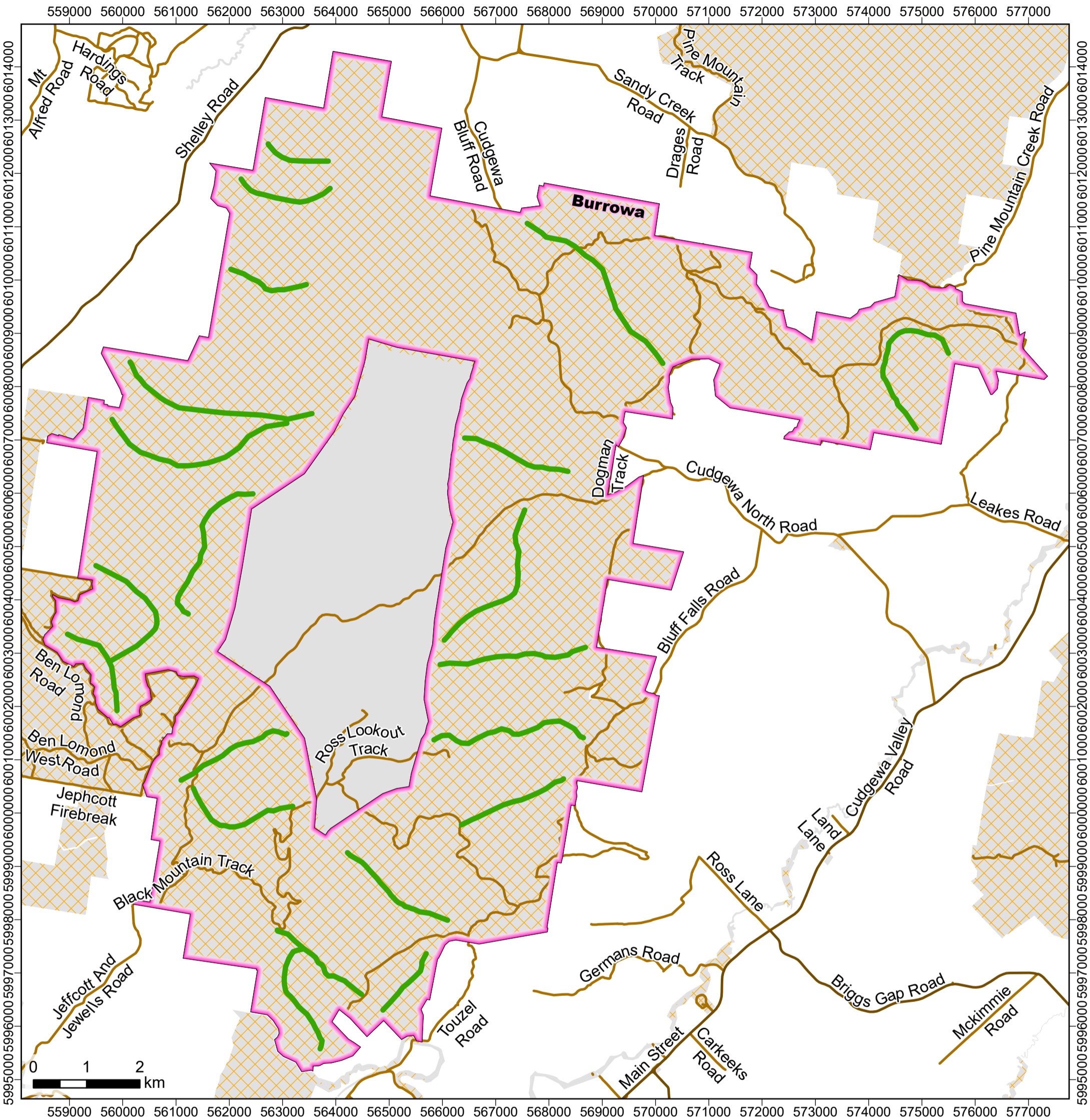






DEECA Wild Dog Program - Aerial Baiting - Spring 2023

Aerial Baiting Area: Burrowa




-  Aerial Baiting Transect
-  Aerial Baiting Area
-  Public Land
-  3km Livestock Protection Buffer (LPB)


Author: pm21


Produced: Thursday, 17 August 2023 1:36:32 PM

Path: C:\Users\pm21\Department of Environment, Land, Water and Planning\Drew X Sutton (DELWP) - Notifications\Aerial Baiting_Spring_2023\AerialBaiting_2023_Spring.aprx

Spatial Reference: Name: GDA2020 MGA Zone 55, PCS: GDA2020 MGA Zone 55, GCS: GDA2020, Datum: GDA2020, Projection: Transverse Mercator

 Copyright: © The State of Victoria Department of Energy, Environment and Climate Action, 2023. This work is licensed under a Creative Commons Attribution 4.0 International licence. For further information in relation the Department's copyright and creative commons refer to www.delwp.vic.gov.au/copyright.

 Disclaimer: This publication may be of assistance to you but the State of Victoria and its employees do not guarantee that the publication is without flaw of any kind or is wholly appropriate for your particular purposes and therefore disclaims all liability for any error, loss or other consequence which may arise from you relying on any information in this publication. For further information refer to www.delwp.vic.gov.au/disclaimer.

 Accessibility: If you would like to receive this publication in an alternative format, please contact our Customer Service Centre on 136 186 or email customer.service@deeca.vic.gov.au. Alternatively contact the National Relay Service on 133 677 or www.relayservice.com.au.



We acknowledge and respect Victorian Traditional Owners as the original custodians of Victoria's land and waters, their unique ability to care for Country and deep spiritual connection to it. We honour Elders past and present whose knowledge and wisdom has ensured the continuation of culture and traditional practices.

