

Tomato Potato Psyllid (TPP): what to look for

Tomato Potato Psyllid (TPP) has been detected in Victoria.

Be alert for the pest and the symptoms in plants.

What to look for

- Adults: small, less than 3 mm long, resembling small-winged cicadas
- Nymphs: flattened, oval, pale yellow, visible on underside of leaves
- Eggs: tiny, less than 0.5 mm long, orange-yellow with a short stalk, found on the lower leaf surface or along the leaf stalk
- Figures 1 to 6 below show the range of signs and symptoms to look for in your crops.

Signs of TPP in crops

- Insects jumping or flying when disturbed
- Wilting, yellowing leaf edges, upward curling
- Stunted plant growth
- Sticky honeydew (psyllid sugars) that may result in sooty mould.



Figure 1: TPP adult and eggs on leaf. White substance is honeydew (sugar-like granules) excreted by TPP (Joseph Munyaneza, USDA)



Figure 2: TPP adult and eggs showing egg stalks from side of leaf (New Zealand Plant and Food)

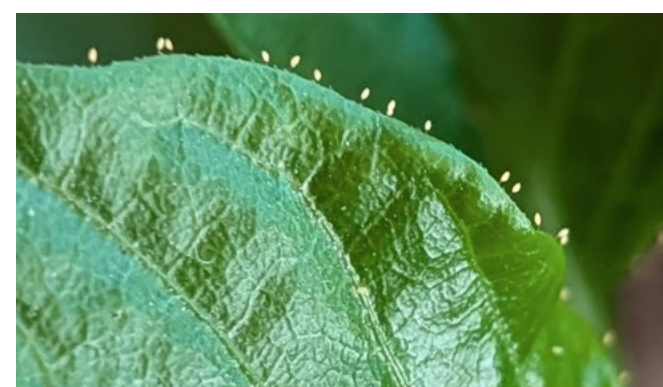


Figure 3: TPP eggs laid along leaf edge (Ashley De Vries)



Figure 4: TPP size relative to 5 cent piece (Department of Primary Industries and Regional Development, Western Australia)



Figure 5: TPP adults and juveniles on the underside of a leaf (Department of Primary Industries and Regional Development, Western Australia)



Figure 6: Honeydew (sugar-like granules) excreted by TPP (Department of Primary Industries and Regional Development, Western Australia)

Why it matters

TPP causes damage to plants and can also transmit the bacteria *Candidatus Liberibacter solanacearum* (CLso). CLso causes zebra chip disease in potatoes that has the potential to cause up to 100 per cent crop loss.

CLso is NOT present in Australia.

Current situation

- On 8 December 2025, restrictions relating to TPP will come into effect when moving plants and produce interstate.
- Movement within Victoria is not affected and no additional intrastate requirements will be established.
- Businesses in Victoria will need to comply with destination jurisdiction entry requirements for TPP when moving plants or produce interstate.
- Agriculture Victoria is developing arrangements to facilitate businesses to maintain market access. This is supported by the development of online initial auditing and training processes to allow businesses to self-certify under the arrangements

- Visit the Agriculture Victoria website to apply for Interstate Certificate Assurances (ICA) and/or Bilateral Protocols.
- As new arrangements become available, they will be communicated to industry via Biosecurity Updates and the Agriculture Victoria website.
- Please confirm state and territory requirements before shipment interstate.

What should you do?

If you suspect TPP **please report** with photos.

Report online at agriculture.vic.gov.au/reportaplantpest OR Call 1800 084 881

Need help taking pest photos?
Visit: agriculture.vic.gov.au/takeaphoto

For more information

More information about TPP can be found on the **Agriculture Victoria website.**

Scan the QR code to visit:



AGRICULTURE VICTORIA