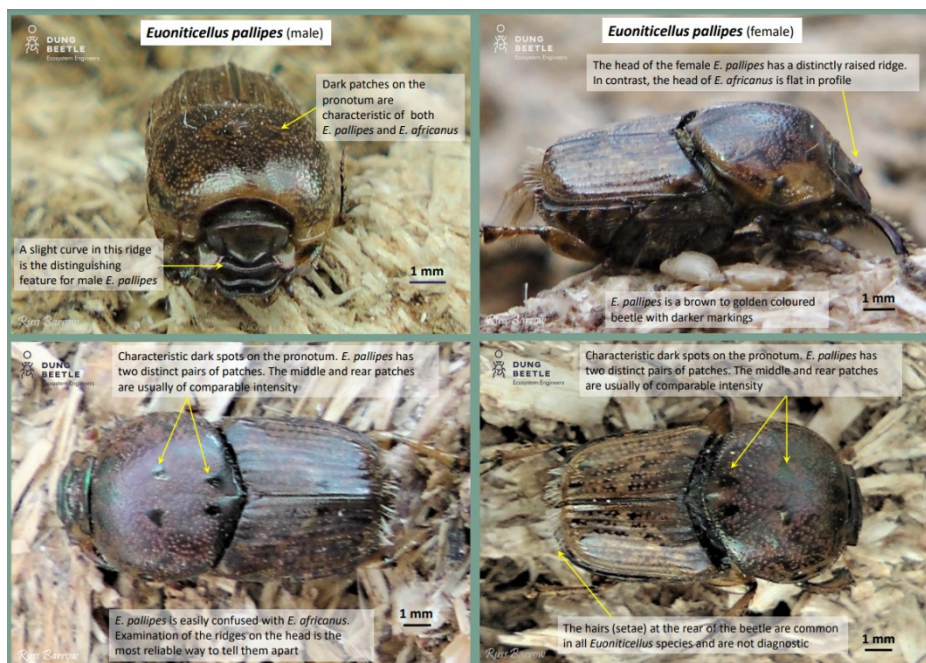


Euoniticellus pallipes (introduced)



Presence of *Euoniticellus pallipes* in Australia (Source: DBEE).

Size: 9-12 mm

Colour: Light to medium brown with speckling over the pronotum and wing covers. 2-3 pairs of dark patches in the centre of the pronotum.

Horns: None. Males and females have characteristic ridges on their head that allow them to be distinguished from each other and other *Euoniticellus* species.

Similar species: *E. pallipes* is similar to other 3 species *E. fulvus*, *E. intermedius*, and *E. africanus*. The markings on the pronotum and ridges on the head sets it apart.

Flight time: Day

Active seasons: Spring to autumn

Distribution in Australia: Victoria, WA, SA, NSW

South West Prime Lamb Group (SWPLG) demonstrations: *E. pallipes* has been caught at Cashmore and near Hamilton in small numbers. *E. fulvus* was found more commonly in SWPLG traps and can be distinguished by a lack of markings on the pronotum.

Lifecycle: *E. pallipes* builds nests with several brood masses, each containing a single egg, which develops into an adult between five and seven weeks later.

Acknowledgements & references:

Identification photos by Russ Barrow- Dung Beetle Ecosystem Engineer (DBEE) Project www.dungbeetles.com.au

Dung Beetle Ecosystem Engineer website: dungbeetles.com.au/species/euoniticellus-pallipes

Dung Beetles in the South West of Western Australia dungbeetlessouthwest.org.au/euoniticellu-pallipes